



RBH Sound

HIGH PERFORMANCE AUDIO



REDEFINING THE WAY YOU EXPERIENCE SOUND.™



(Includes 1 pair of EP3 earphones, 1 set of Comply™ isolation tips (black T-200 medium - attached to earphones), 1 set of Comply™ isolation tips (black T-200 large), 1 set of silicone ear cushions in small, medium, and large, 2 iPhone 6/6+ stabilizing spacers, cord clip, carry pouch, and owner's manual)



EP3 Noise Isolating Earphones deliver the high fidelity our company is known for to your iPhone®, iPod®, MP3 player, smart phone or other personal audio player. Our continuous quest for optimal performance led us to the use of ceramic housing. Ceramic, due to its relatively neutral acoustic properties, improves audio performance, resulting in high fidelity while providing a polished visually stunning appearance. The microphone and smartphone control module adds several convenience functions with just the push of a single button, becoming almost

hands-free with the microphone close to the mouth for clearer conversations. Regular earbuds, like the ones that come with your player, just can't match the EP3's performance, control or noise isolation capabilities!

EP3

NOISE ISOLATING EARPHONES WITH MICROPHONE


(Includes 1 pair of EP2 earphones, 1 set of Comply™ isolation tips (black T-400 medium - attached to earphones), 1 set of Comply™ isolation tips (black T-400 large), 1 set of silicone ear cushions in small, medium, and large, 2 iPhone 6/6+ stabilizing spacers, cord clip, carry pouch, and owner's manual)



The EP2 earphones deliver the awesome performance of the EP1 and also include a microphone control module which adds several functions with only the push of a button. By activating functions with the press of the button, the EP2 earphones become virtually hands-free, no fumbling for your phone to answer a call; just click the EP2's control button, and enjoy the best sounding phone call you've ever heard! The module allows you to answer and end calls, and depending upon your phone's capabilities, the button can be used to control music and video playback by single- or double-pressing the button.

EP2

NOISE ISOLATING EARPHONES WITH MICROPHONE



The EP1 earphones deliver a wide sound stage free from outside noise and interruptions. Aluminum housings, premium materials, strict tolerances, gold connector jack and a cloth woven cord for comfort and less tangle are some of the features of the EP1. The RBH reputation for quality is evident in the construction, attention to detail and clear sound.

These durable and stylish earphones come with a protective carrying pouch, a cord clip, Comply™ Foam Tips, and large, medium, and small silicone ear cushions for a comfortable and personalized fit.

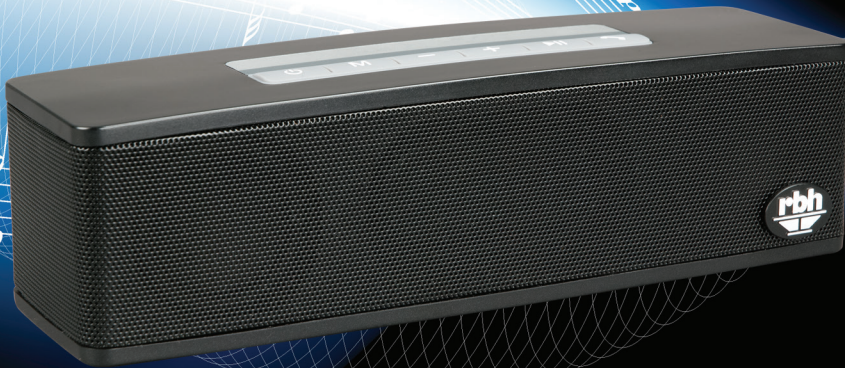
Includes 1 pair of EP1 earphones, 1 set of Comply™ isolation tips (black T-400 medium - attached to earphones), 1 set of Comply™ isolation tips (black T-400 large), 1 set of silicone ear cushions in small, medium, and large, cord clip, carry pouch, and owner's manual)

EP1

NOISE ISOLATING EARPHONES

(Includes one Sidekick Bluetooth® speaker, USB cable for keeping the speaker charged, and owner's manual)

The RBH Sidekick is our new personal Bluetooth® speaker. Connect to any Bluetooth device or use a Micro SD card to play your favorite tunes. Bluetooth® connections are simple and convenient. The Sidekick's sound is unwavering and smooth and it has lots of features easily controlled by the buttons on the top of the speaker. If you're on the move, the Sidekick is portable take it with you wherever you go. The Sidekick comes with a USB cable for keeping the speaker charged and it will play up to 5-6 hours when fully charged. The Sidekick also comes with an audio cable for connecting to non-Bluetooth devices.




Sidekick
BLUETOOTH® SPEAKER

FEATURES

- Bluetooth®, support AUX IN, MICRO SD card.
- Press a single button to answer the phone.
- Supports MP3 & WMA audio formats.
- LED indicator.
- Memorizes function after powered off.
- Built-in lithium battery allows 6 hours of playing with normal volume.
- 2-channel sound, dual-membrane super bass (patented) provides surprising and powerful bass.





(Includes 1 pair of HP-2 headphones, protective carrying case, user's manual, 2 iPhone 6/6+ stabilizing spacers, 1/8-inch to 1/4-inch phono jack plug adapter, and two detachable cables: (1) 3.9-foot (1.2m) deluxe black cable with controller and microphone and (1) 3.9-foot (1.2m) High Resolution Cable.)

With the ultra-light HP-2 headphones, you will be able to experience the same level of sonic fidelity as our reference speaker systems at just a fraction of the size, cost and weight.

We have gone to great lengths to make sure the HP-2 headphone is ultra-light for its size, so the listening experience can last for hours without discomfort and fatigue. The pillow soft ear cushions are made with low-mass visco-elastic memory foam for exceptional comfort.

HP-2

ULTRALIGHT BERYLLIUM HEADPHONES

(Includes 1 pair of HP-1B headphones, protective carrying case, user's manual, 1/8-inch to 1/4-inch phono jack plug adapter, and two detachable cables: (1) 3.9-feet (1.2m) deluxe black cable with controller and microphone and (1) 3.9-feet (1.2m) High Resolution Cable.)

- Hi-Fi Sound
- Bluetooth 4.0
- Noise Isolation
- Lightweight
- Rechargeable Battery
- Easy to Carry
- Supports Connecting with Two Devices



HP-1B

BLUETOOTH STEREO HEADPHONES

FEATURES

- Compact, lightweight, portable design for easy traveling and comfort during light sport activities.
- Enjoy wireless music and receive a phone call at the same time
- Control switch for song functions with auto-mute when receiving an incoming phone call.
- NFC technology for easy pairing and connecting.
- Includes aptX® CODEC technology to enjoy CD quality sound. (Source must also have aptX®).
- IPX4 rated using nano-coating technology, sweat and rain proof.
- Comply™ active (blue) tips for comfort during sporting activities. Large attached to earphones, medium included.
- Comply™ isolation (black) tips in medium included.
- Silicone ear tips in small, medium and large sizes included.
- Durable storage pouch for on-the-go protection and convenience.



(Includes 1 pair of EP-SB earphones, 1 set of Comply™ isolation tips (black T-500 medium - attached to earphones), 1 set of Comply™ active tips (blue S-500 large), 1 set of Comply™ active tips (blue S-500 medium), 1 set of silicone ear cushions in small, medium, and large, 1 pair high-activity stabilizers, 2 cord-shortening clips, Micro-USB charge cable, carry pouch, and owner's manual)

EP-SB

BLUETOOTH STEREO EARPHONES



Sometimes you need wires.

Sometimes you don't.

BT-100

BLUETOOTH STEREO AMPLIFIER

FEATURES

Easy setup connects in seconds.

Plug-n-play, no software to install.

Superior sound and extended range.

Streams audio from any media player.

Connects to any music system.

100W RMS (50W x 2) @ 4 Ohms

50W RMS (25W x 2) @ 8 Ohms

